





A Look Inside the Summer Lookbook

P. 4 – 5 OUR STORY

Ceiling fans designed for Australians

P. 6 – 19 MODERN & CONTEMPORARY

P. 8 – 9 *The FlatJET*

P. 10 – 11 *The Modn-4*

P. 12 – 13 *The Modn-3*

P. 14 – 15 *The Aspire*

P. 16 – 17 *The Flume*

P. 18 – 19 *The Simplicity*

P. 20 – 35 NEW TRANSITIONAL

P. 22 – 23 *The Delta*

P. 24 – 25 *The Delta LED*

P. 26 – 27 *The Spitfire*

P. 28 – 29 *The Spitfire DC*

P. 30 – 31 *The Trinity*

P. 32 – 33 *The Arumi*

P. 34 – 35 *The Kute*

P. 36 – 44 COASTAL

P. 38 – 39 *The Tropicana 54*

P. 40 – 41 *The Tropicana 72*

P. 42 – 43 *The Kirra*

P. 44 – 45 *The Timbr*

P. 46 – 55 BUYER'S GUIDE

P. 48 – 49 *Match your fan to your space*

P. 50 – 51 *Choosing the right fan size*

P. 52 – 53 *Ceiling fan performance*

P. 54 – 55 *How high to hang your fan*



P. 46 – 55

Ceiling fan buyer's guide –
find the perfect fan



P. 48 – 49

How to match your ceiling fan
to your space



P. 50 – 51

How to choose the right fan
size for your room



TRINITY DC CEILING FAN IN OIL-RUBBED BRONZE

Ceiling fans designed and engineered for Australians, by Australians.



Our Story

Inspired by what's possible and driven by the practical, ThreeSixty Fans is dedicated to providing beautifully designed and premium quality ceiling fans that complement and enhance the amazing Australian lifestyle.

We're on a mission to make ceiling fan shopping easier and more inspiring, so you stay comfortable in style. Our ceiling fans are designed and engineered for Australians, by Australians.

Originally founded as Crestwind Fans in 2003 to help keep Australians cool, our company has evolved into a design-focused, quality-obsessed ceiling fan manufacturer catering to customers seeking more than just a ceiling fan.

Drawing from a combined decade worth of experience in the industry, our dedication to quality craftsmanship goes beyond just what is seen. Only the highest quality components and engineering standards guarantee our ceiling fans are built to last.

We're as obsessed with service as we are with fans.

Everyone has different needs and preferences when it comes to their ceiling fan. We believe shopping for your new fan should be straightforward. We've expanded on the typical ceiling fan industry jargon so you don't need an engineering degree to understand whether your new fan is going to help you stay cool.

Our friendly team is available to assist in any way we can — whether that's helping you find a new statement piece for your living space or fixing any issues once your new fan is installed — we'd love to hear from you.

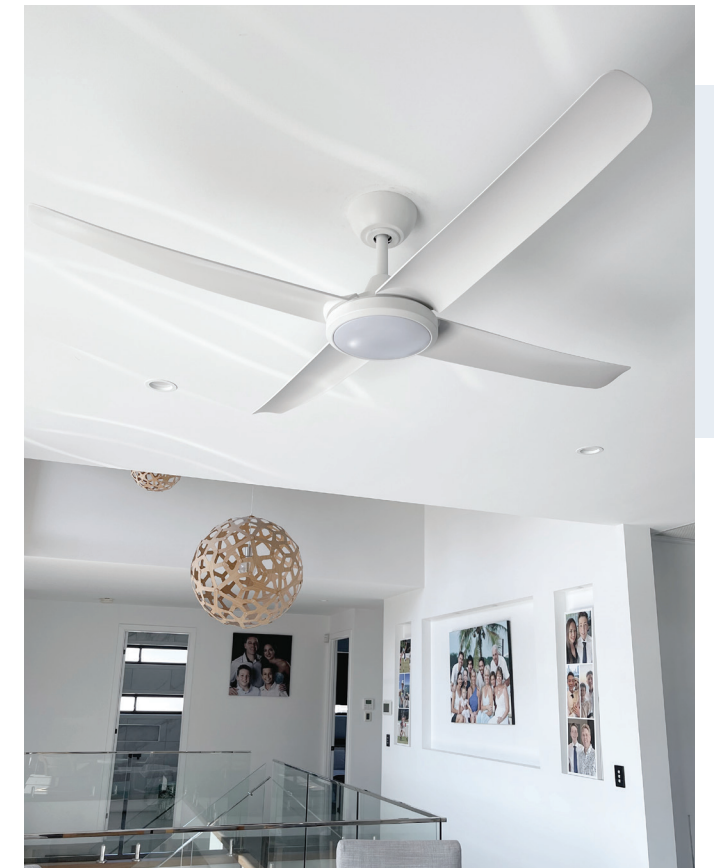
Chris T.

CHRIS THOMPSON
PRODUCT DEVELOPER

Modern & Contemporary

A trend that is free of clutter and full of clean streamlined spaces.

Modern style that embodies a sense of simplicity found in every element. Clean crisp lines, geometrical shapes, tailored silhouettes, & sophisticated colour blocking are only a few of the design details featured in this trend. Subtle nods to Mid- Century Modern and Art Deco decor are also found here. Modern/ Contemporary is a trend where almost all of ThreeSixty Fan's designs can live. Modern contemporary elements - geometric shapes, simple clean lines, rounded modern shapes, layered architectural elements, acrylics, matte finishes, and minimal details help to create the modern contemporary look & feel.





The FlatJET

High-performance modern cooling with 3, 4 or 5 blades

Crisp modern lines coupled with a high performance and low energy motor, the 56" (142 cm) FlatJET DC ceiling fan effectively delivers power, control and comfort that perfectly complements contemporary Australian living (indoors and outdoors). Now available with 3, 4 or 5 blade options and an impressive 24W CCT dimmable LED light. Thanks to its unique modern design, powerful air movement, feature-packed remote control and power-saving DC motor the FlatJET ceiling fan raises the bar on form and function where it matters.



MOTOR
TECHNOLOGY



56
INCH
BLADE SPAN



188
RPM
ON HIGH



40
WATTS
ON HIGH



LED LIGHT
AVAILABLE



REMOTE
INCLUDED

SCAN QR CODE



01



03



02



04



01

FLJ56BK
56" (142cm) FlatJET 3/4/5 Blade DC Ceiling Fan in Black



02

FLJ56MW
56" (142cm) FlatJET 3/4/5 Blade DC Ceiling Fan in Matte White



03

FLJ56BKLED
56" (142cm) FlatJET 3/4/5 Blade DC Ceiling Fan in Black with 24W LED Light



04

FLJ56MWLED
56" (142cm) FlatJET 3/4/5 Blade DC Ceiling Fan in Matte White with 24W LED Light



The Modn-4

Crisp, clean and modern cooling

Capturing the clean and crisp lines of modern decor, the Modn-4 (pronounced “modern four”) ceiling fan has a 52” (132 cm) blade span, aluminium blades, wall control and is light adaptable. The sleek and stylish 52” Modn-4 ceiling fan has been designed with the modern Australian home in mind. With clean lines and a slim profile that will blend into any room, the Modn-4 is a designer ceiling fan with four aluminium blades, a 52-inch blade span, and is available in either Black or White. The 52-inch blade span is suitable for small to medium spaces, both indoors and outdoors.



MOTOR
TECHNOLOGY



INCH
BLADE SPAN



RPM
ON HIGH



WATTS
ON HIGH



LED LIGHT
AVAILABLE



WALL CONTROL
INCLUDED

SCAN QR CODE



01



01



02



02



01 FM22BL
52" (132 cm) Modn-4 Ceiling Fan in Black



02 FM22WH
52" (132 cm) Modn-4 Ceiling Fan in White



03 FM22BLLED
52" (132 cm) Modn-4 Ceiling Fan in Black
with 18W LED Light



04 FM22WHLED
52" (132 cm) Modn-4 Ceiling Fan in White
with 18W LED Light

The Modn-3

Refreshing take on the modern ceiling fan

A refreshing take on the modern ceiling fan, the Modn-3 (pronounced “modern three”) is a designer ceiling fan with three aluminium blades, an ultra modern design, a 52-inch (132 cm) blade span, and is available in either Black or White finishes. The Modn-3 ceiling fan has been designed and engineered to provide moderate cooling with an eye on efficiency, ideal for smaller bedrooms and living spaces. A great option for spaces where gentle to moderate airflow is desired, the Modn-3 offers a modern aesthetic built on tried and true AC motor technology designed to last.



AC
MOTOR
TECHNOLOGY



52
INCH
BLADE SPAN



188
RPM
ON HIGH



55
WATTS
ON HIGH



LED LIGHT
AVAILABLE



WALL CONTROL
INCLUDED

SCAN QR CODE



01



01



02



02



01

FM30BL
52" (132 cm) Modn-3 Ceiling Fan in Black



02

FM30WH
52" (132 cm) Modn-3 Ceiling Fan in White



03

FM30BLLED
52" (132 cm) Modn-3 Ceiling Fan in Black
with 18W LED Light



04

FM30WHLED
52" (132 cm) Modn-3 Ceiling Fan in White
with 18W LED Light



The Aspire

Minimalist lines and stylish curves

With minimalist lines and stylish curves, the Aspire is crafted from aluminium and features four all-weather polymer blades that are corrosion-proof and UV-stabilised to guarantee long-lasting performance. The 52-inch (132 cm) blade span is suitable for small to medium spaces, both indoors and outdoors. Powered by a high-performance, reliable, and time-tested AC motor that is reversible, so you can change the direction of your ceiling fan seasonally for year-round comfort. Add an optional 18W dimmable LED light kit to turn your ceiling fan into a light source.



MOTOR
TECHNOLOGY



INCH
BLADE SPAN



RPM
ON HIGH



WATTS
ON HIGH



LED LIGHT
AVAILABLE



WALL CONTROL
INCLUDED

SCAN QR CODE



01



03



02



02



01

FA12BL
52" (132 cm) Aspire Ceiling Fan in Black



02

FA12WH
52" (132 cm) Aspire Ceiling Fan in White



03

FA12BLLED
52" (132 cm) Aspire Ceiling Fan in Black
with 18W LED Light



04

FA12WHLED
52" (132 cm) Aspire Ceiling Fan in White
with 18W LED Light



The Flume

Sweeping, elongated designer blades

The beautiful, elongated and sweeping lines of the Flume ceiling fan's impressive 60" (152 cm) blade span adds understated elegance to your space. Designed and engineered to evoke the ethos of minimalism and modern design, the Flume's single direction motor is cleverly concealed. This helps accentuate the elegantly moulded aerodynamic polymer blades, carefully crafted to deliver efficient cooling where and when you need it.



AC
MOTOR
TECHNOLOGY



60
INCH
BLADE SPAN



180
RPM
ON HIGH



58
WATTS
ON HIGH



WALL CONTROL
INCLUDED

SCAN QR CODE



01 FLU60BK
60" (152 cm) Flume Ceiling Fan in Black

02 FLU60BKDK
60" (152 cm) Flume Ceiling Fan in Black/
Koa

03 FLU60MW
60" (152 cm) Flume Ceiling Fan in White

04 FLU60MWNA
60" (152 cm) Flume Ceiling Fan in White/Natural

05 FLU60MWWW
60" (152 cm) Flume Ceiling Fan in White/
White Washed



Simplicity

Sweeping, minimalist cooling

The Simplicity DC is a stunningly designed ceiling fan with a focus on modern and minimalist ethos. Sweeping blades coupled with a small motor housing ensure the Simplicity will blend harmoniously into its surroundings for a discreet and subtle addition.

Available in 45" (114 cm) and 52" (132 cm) blade spans, the Simplicity is ideal for small to medium size bedrooms and living spaces. With a remote control included, the Simplicity also offers an 18W LED Light version for those times you need your ceiling fan to also be a light source.

SCAN QR CODE



MOTOR
TECHNOLOGY



45 52
INCH
BLADE SPANS



184
RPM
ON HIGH



31
WATTS
ON HIGH



LED LIGHT
AVAILABLE



REMOTE
INCLUDED



SIM45BK
45" (114 cm) Simplicity Ceiling Fan in Black



SIM45MW
45" (114 cm) Simplicity Ceiling Fan in White



SIM45BKLED
45" (114 cm) Simplicity Ceiling Fan in Black with LED Light



SIM45MWLED
45" (114 cm) Simplicity Ceiling Fan in White with LED Light

MODERN & CONTEMPORARY



SIM52BK
52" (132 cm) Simplicity Ceiling Fan in Black



SIM52MW
52" (132 cm) Simplicity Ceiling Fan in White



SIM52BKLED
52" (132 cm) Simplicity Ceiling Fan in Black with LED Light



SIM52MWLED
52" (132 cm) Simplicity Ceiling Fan in White with LED Light



New Transitional

A modern twist on a classic style.

The New Transitional trend offers a combination of comfortable furniture, classic designs and timeless decor. Symmetrical lines, subtle curves, clean aesthetic with modern touches are all found here. New Transitional style embodies an overall feel of modern elegance that can make any room have a polished feel. Transitional elements such as polished and matte finishes, combine to create a soft layered mix of metals. Clean, marble accents and mirrored furniture help to exude an air of modern elegance found within this fresh new take on traditional decor.





The Delta

Ultra-slim and ultra-sleek modern cooling

Engineered almost completely from all-weather polymer – a high-grade, corrosion-proof and UV-stabilised plastic – the Delta ceiling fan has been crafted to resist the elements. The 56-inch (142 cm) blade span is suitable for medium to large spaces, both indoors and outdoors. Featuring a highly efficient DC motor paired with aerodynamic polymer blades, the Delta DC ceiling fan includes a 6-speed remote control with reversing function (for summer and winter comfort) and fan-off timers for set-and-forget convenience.



MOTOR
TECHNOLOGY



56
INCH
BLADE SPAN



225
RPM
ON HIGH



40
WATTS
ON HIGH



REMOTE
INCLUDED

SCAN QR CODE



01



03



02



02



01

DEL56BK
56" (142 cm) Delta DC Ceiling Fan in Black

03

DEL56OB
56" (142 cm) Delta DC Ceiling Fan in Oil-rubbed Bronze/Koa

02

DEL56MW
56" (142 cm) Delta DC Ceiling Fan in White



The Delta with LED

High-performance cooling with dimmable LED Light

Our best-selling ceiling fan now has a sleek LED light option available! With its sleek and modern style, amazing airflow and highly-efficient performance, the Delta with LED takes an already impressive ceiling fan and finishes it with a stunningly-designed and integrated LED light. The long-life & long-lasting LED light panel is dimmable and incorporates colour-changeable technology (CCT) so you can set the colour temperature to match your space — Daylight, Cool or Warm.



DC
MOTOR
TECHNOLOGY



56
INCH
BLADE SPAN



225
RPM
ON HIGH



40
WATTS
ON HIGH



LED LIGHT
INCLUDED



REMOTE
INCLUDED

SCAN QR CODE



01 DEL56BKLED
56" (142 cm) Delta DC Ceiling Fan in Black
with dimmable CCT LED Light

02 DEL56MWLED
56" (142 cm) Delta DC Ceiling Fan in White
with dimmable CCT LED Light

03 DEL56OBLED
56" (142 cm) Delta DC Ceiling Fan in Oil-
rubbed Bronze/Koa with dimmable CCT
LED Light



The Spitfire

Understated, modern, and minimalist cooling with stunning timber blades

The Spitfire is a premium ceiling fan with an understated, modern, and minimalist design. The 60" (152 cm) Spitfire ceiling fan features all-weather polymer blades with high-grade timber finishes. These blades are UV-treated and weather-resistant, so they'll stay beautiful for years to come. The long-lasting polymer blades are paired with a reliable AC motor (which is reversible for summer/winter operation) to bring you years of comfort. Including a wall control, the Spitfire has four motor finishes to choose from, plus five-blade options to suit your decor.



AC
MOTOR
TECHNOLOGY



60
INCH
BLADE SPAN



166
RPM
ON HIGH



80
WATTS
ON HIGH



LED LIGHT
AVAILABLE



WALL CONTROL
INCLUDED

SCAN QR CODE



MS21BL
Black



MS21BN
Brushed Nickel



MS21MW
Matte White



MS21OB
Oil-rubbed Bronze



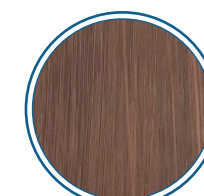
BS21BL
Black



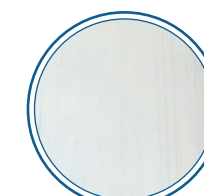
BS21NA
Natural



BS21KA
Koa



BS21WA
Walnut



BS21WW
White Wash

COMING SOON! ARRIVING Q2 2023

MODERN & CONTEMPORARY

Spitfire DC

Our most popular design now in DC and two sizes.

Our hugely popular Spitfire ceiling fan range is now being developed in a new DC version for improved energy efficiency and a sleeker motor design. Featuring stylish timber-finish polymer blades, the Spitfire DC ceiling fan will be available in 52" and 60" sizes to accommodate more rooms in your home for a consistent aesthetic.

The Spitfire DC range will include remote controls and have an optional LED light available for those times you need your fan to also be a light source.

Expected to launch in the first half of 2023.

SCAN QR CODE



Get notified when the Spitfire DC launches.
Scan the QR Code above and enter your email
address to stay up to date.



MOTOR
TECHNOLOGY



52
60
INCH
BLADE SPANS



LED LIGHT
AVAILABLE



REMOTE
INCLUDED



The Trinity

High performance, highly-efficient cooling

Sleek and elegant, the Trinity DC ceiling fan utilises the latest in DC motor technology to provide a high-performance, highly efficient ceiling fan that is available in 56" (142 cm) and 48" (122 cm) sizes. Featuring a highly efficient DC motor paired with aerodynamic aerofoil blades crafted from polymer – a high-grade, corrosion-proof and UV-stabilised plastic. Includes an 8-speed remote control with reversing function (for summer and winter comfort), natural wind mode, and fan-off timers for set-and-forget convenience. An optional 20W CCT dimmable LED light kit accessory is also available.



MOTOR
TECHNOLOGY



48
56
INCH
BLADE SPANS



210
RPM
ON HIGH



34
WATTS
ON HIGH



LED LIGHT
AVAILABLE



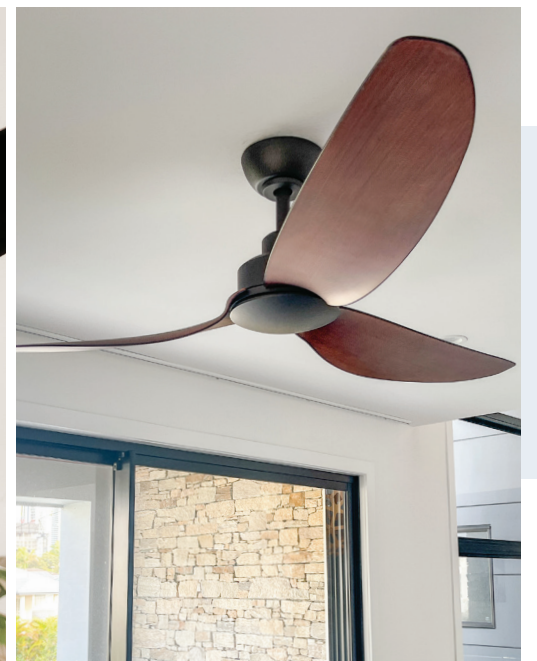
REMOTE
INCLUDED

SCAN QR CODE



TRI48BKLED

48" (122 cm) Trinity DC Ceiling Fan in Black with LED Light



TRI48OB

48" (122 cm) Trinity DC Ceiling Fan in Oil-rubbed Bronze



TRI56MWLED

56" (142 cm) Trinity DC Ceiling Fan in White with LED Light



TRI56OB

56" (142 cm) Trinity DC Ceiling Fan in Oil-rubbed Bronze



SEE THE FULL
RANGE ONLINE



The Arumi

High performance cooling in a sleek & elegant finish

Sleek and elegant, the Arumi ceiling fan blends a modern design with aerodynamic performance to create a powerful cooling solution for your contemporary décor. Combining a stylish and compact motor with three all-weather polymer blades, the Arumi includes a wall control as standard and is LED light kit adaptable.



AC
MOTOR
TECHNOLOGY



52
INCH
BLADE SPAN



197
RPM
ON HIGH



77
WATTS
ON HIGH



LED LIGHT
AVAILABLE



WALL CONTROL
INCLUDED

SCAN QR CODE



02



01



03



01

ARU52BKKA
52" (132 cm) Arumi Ceiling Fan in Black/Koa



02

ARU52PWKA
52" (132 cm) Arumi Ceiling Fan in Pewter/
Koa



03

ARU52MWWO
52" (132 cm) Arumi Ceiling Fan in Matte
White/Washed Oak



ARU52MWWW
52" (132 cm) Arumi Ceiling Fan in Matte
White/White Washed



SEE THE FULL
RANGE ONLINE



The Kute

Chic & modern cooling ideal for small to medium spaces

The Kute DC ceiling fan's small motor housing and elegant blade shape add subtle elegance to any space. Available in 5 different finishes and two sizes, the Kute DC ceiling fan also has an optional 14W LED Light Kit available. Bundled with a smart and stylish 6-speed remote control, the Kute DC ceiling fan includes a range of intelligent features such as fan reversing and fan off timers.



MOTOR
TECHNOLOGY



44 52
INCH
BLADE SPANS



170
RPM
ON HIGH



30
WATTS
ON HIGH



LED LIGHT
AVAILABLE



REMOTE
INCLUDED

SCAN QR CODE



KUT44GRWE
44" (112 cm) Kute DC Ceiling Fan in Graphite/Weathered Wood



FA12SBMWLED
44" (112 cm) Kute DC Ceiling Fan in Satin Brass/White with LED Light



KUT52BK
52" (132 cm) Kute DC Ceiling Fan in Black



KUT52WHWO
52" (132 cm) Kute DC Ceiling Fan in White/Washed Oak



SEE THE FULL
RANGE ONLINE



Coastal

Ocean-inspired hues and natural materials.

The Coastal trend is one of the fastest growing décor styles in Australia, celebrating natural light and ocean-inspired hues, coupled with natural materials and organic shapes. This signature look is based on coastal pieces, beach-inspired accessories, nautical elements and natural textures. There is also the natural Scandinavian look that is based on simplicity and functionality that can be used in all rooms of the house.





The Tropicana 54

Palm leaves and cool breezes

Inspired by palm leaves and cool breezes, the 54" (138 cm) Tropicana's beautifully detailed polymer blades have been carefully crafted to evoke a resort-style aesthetic. The tropical style blades are crafted from all-weather polymer (a high grade, stunningly detailed plastic that's completely resistant to rust and corrosion) to provide quiet and gentle airflow. The Tropicana includes a 3-speed wall controller as standard, with accessory remote controls and an optional LED light kit also available.



AC
MOTOR
TECHNOLOGY



54
INCH
BLADE SPAN



172
RPM
ON HIGH



82
WATTS
ON HIGH

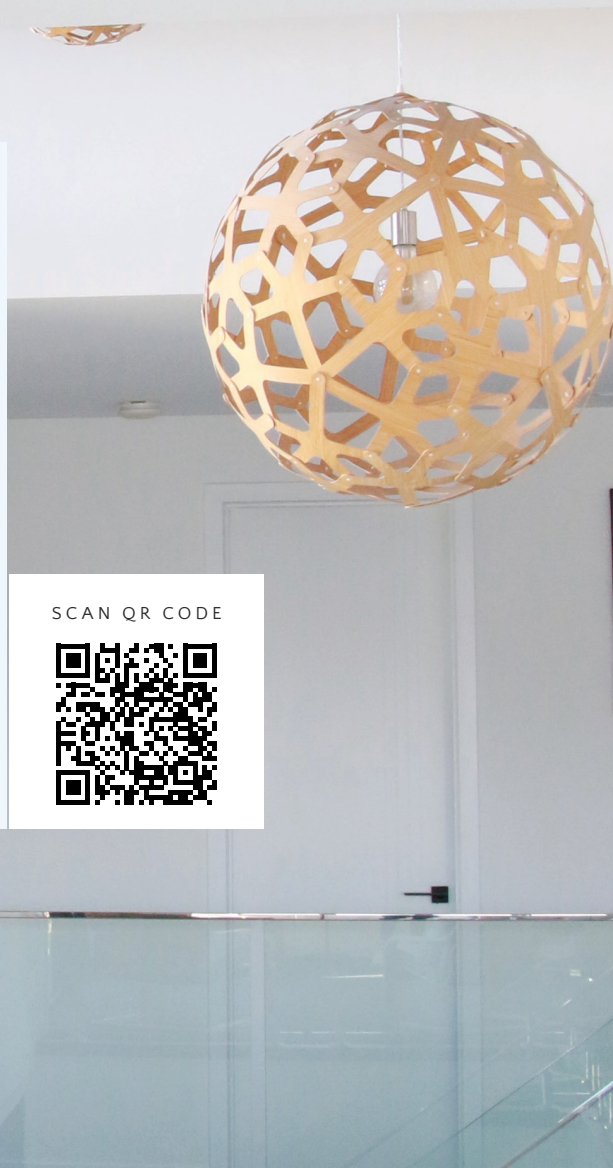


LED LIGHT
AVAILABLE



WALL CONTROL
INCLUDED

SCAN QR CODE



TRO54MWBR
54" (138 cm) Tropicana Ceiling Fan in White/Palm Brown



TRO54MWWH
54" (138 cm) Tropicana Ceiling Fan in White/Palm White



TRO54OBBR
54" (138 cm) Tropicana Ceiling Fan in Bronze/Palm Brown



TRO54MWWHLED
54" (138 cm) Tropicana Ceiling Fan in White/Palm White
with LED Light





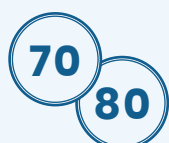
The Tropicana XL

Sweeping, curved blades for elegant and gentle cooling

Guaranteed to make a statement no matter where it's installed, but it's especially effective in large enclosed spaces. With an impressive blade span of 70, 72 inches or 80 inches, this elegant fan is ideal for spaces with high ceilings or large living areas. The Tropicana includes a 3-speed wall controller as standard, with accessory remote controls and an optional LED light kit also available.



MOTOR
TECHNOLOGY



BLADE SPANS



RPM
ON HIGH



WATTS
ON HIGH



LED LIGHT
AVAILABLE



WALL CONTROL
INCLUDED

SCAN QR CODE



COASTAL



TRO72MWWA
72" (183 cm) Tropicana Ceiling Fan in White/Walnut



TRO72MWWW
72" (183 cm) Tropicana Ceiling Fan in White/White Washed



TRO700BTK
70" (178 cm) Tropicana Ceiling Fan in Bronze/Teak



TRO800BMH
80" (203 cm) Tropicana Ceiling Fan in Bronze/Mahogany



The Kirra

Impressive in every way - ultra high airflow.

At a massive 100 inches (254 cm) the Kirra is impressive in every way. For those looking to make the ultimate statement, the Kirra has been carefully designed and engineered to add that “wow” factor to large indoor and outdoor spaces. Combining a high-performance DC motor with sweeping aerodynamic timber blades, the Kirra ceiling fan moves huge volumes of air for highly efficient cooling in large spaces.



MOTOR
TECHNOLOGY



INCH
BLADE SPAN



RPM
ON HIGH



WATTS
ON HIGH



REMOTE
INCLUDED

SCAN QR CODE



KIR100BKNA
100" (254 cm) Kirra DC Ceiling Fan in Black/Natural



KIR100BKWA
100" (254 cm) Kirra DC Ceiling Fan in Black/Walnut



KIR100MWNA
100" (254 cm) Kirra DC Ceiling Fan in White/Natural



KIR100MWWA
100" (254 cm) Kirra DC Ceiling Fan in White/Walnut

The Timbr

Sweeping, minimalist cooling

Make an elegant statement in your large space thanks to the Timbr's stunningly crafted Paulownia timber blades with a sweeping 183 cm blade span. Each blade is carefully crafted from Paulownia — a light-weight, moisture-resistant and highly renewable plantation timber — and hand-finished to help accentuate the unique natural character of the timber grain. The Timbr DC offers extremely efficient airflow, ideal for large enclosed spaces, has an LED light option and includes a 6-speed remote control with fan reversing and fan off timers built-in.



MOTOR
TECHNOLOGY



72
INCH
BLADE SPAN



112
RPM
ON HIGH



36
WATTS
ON HIGH

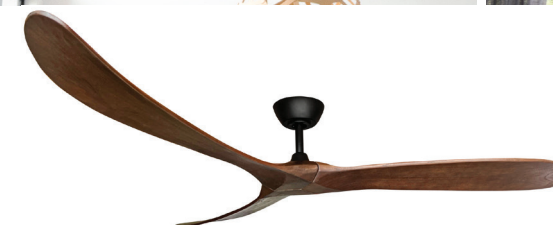


LED LIGHT
AVAILABLE



REMOTE
INCLUDED

SCAN QR CODE



TIM72BKWA
72" (183 cm) Timbr Ceiling Fan in Black/Walnut



TIM72MWNA
72" (183 cm) Timbr Ceiling Fan in White/Natural



TIM72MWWO
72" (183 cm) Timbr Ceiling Fan in White/Weathered Oak



TIM72MWNALED
72" (183 cm) Timbr Ceiling Fan in White/Natural with LED Light



SEE THE FULL
RANGE ONLINE



Ceiling Fan Buyer's Guide



60 INCH SPITFIRE IN WHITE/NATURAL

Choosing the right ceiling fan for your space and personal preferences can be confusing. We want to help make your shopping experience easier and more inspiring, so you stay comfortable in style.

Although to most people, a ceiling fan is a ceiling fan, when it comes time for you to make your choice the type and purpose of your ceiling fan can be worlds apart. A ceiling fan is not a one size fits all solution, certain ceiling fans can be a good or bad choice depending on their application.

Some fans are designed to move huge amounts of air at a high RPM whereas others are designed to be quiet in operation to provide a breeze but not heard.

Today, energy efficiency is a huge consideration to most household appliances, ceiling fans included.

In recent years, the humble ceiling fan has grown in its sophistication to become an integral part of the styling and comfort in our homes. Within each home comes different requirements for your ceiling fan – DC motor or AC motor? Diameter of the ceiling fan for the space?

SCAN QR CODE



Read our full Ceiling Fan Buyer's Guide online for additional advice on buying your new ceiling fan.

Match your fan to *your space*



When choosing the right finish and style for your ceiling fan, decide if you want a **subtle** addition or a **statement** piece.

The collections outlined in our Lookbook are a guideline to matching our ceiling fans to trending styles, and provide a starting point for choosing the right ceiling fan for your space. Keep in mind that the colour and finish of a ceiling fan can dramatically change how it integrates with a space.

Once you've chosen a style, the next step is to match the ceiling fan to your colour palette – and this depends on whether you are looking for a subtle addition to your space that blends in, or a statement piece that will stand out.

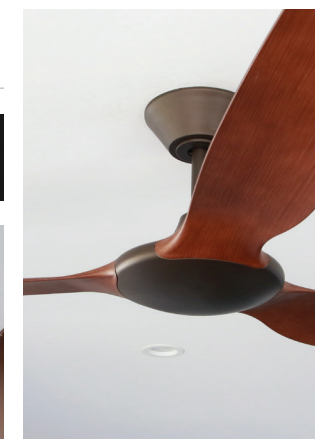
Make a statement in your space by adding a bold contrast to your interior colour scheme.

Since most interiors are typically painted with neutral colours such as whites and creams, darker finished ceiling fans such as black and bronze provide a stark and bold contrast that will draw the eye.

By matching the finish of the motor to permanent fixtures in the space (e.g. taps, hardware, door knobs, large furniture), black and bronze motor finishes lend themselves well to timber grain finishes on the ceiling fan blades to match timber aesthetics found in today's interior styling trends.

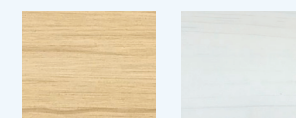
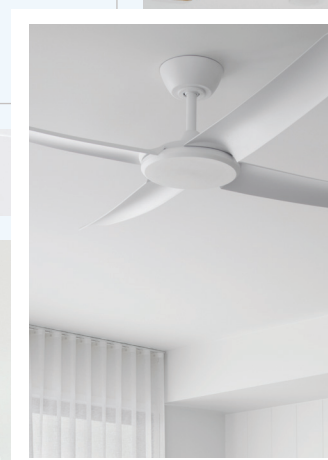
Statement

CONTRAST
& ADD
VARIETY



Subtle

BLEND IN
WITH YOUR
SPACE



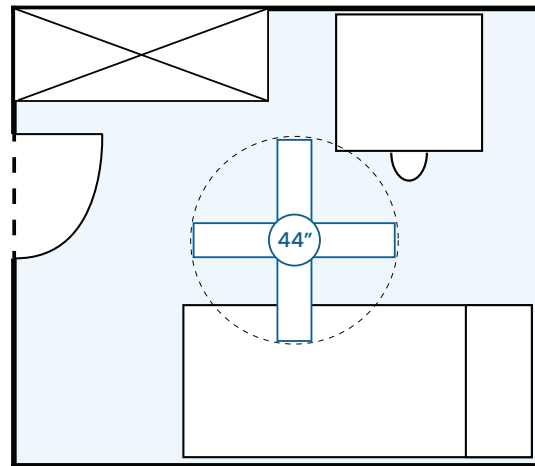
Choose a ceiling fan that blends in to your space by matching the colours in your room.

White and silver ceiling fans are often a safe choice for anyone wanting their ceiling fan to disappear into the space, as they better blend with white and cream interior colour schemes. Choosing an all-white ceiling fan that matches your style will provide the benefits of functional cooling without distracting from your room's aesthetics.

An emerging trend is to introduce subtle textures by matching a white motor ceiling fan with timber finish blades. For decors that include timber aesthetics (either furnishing or timber beams) this can be a discreet way to further integrate a ceiling fan into your space.

Choosing the right fan size

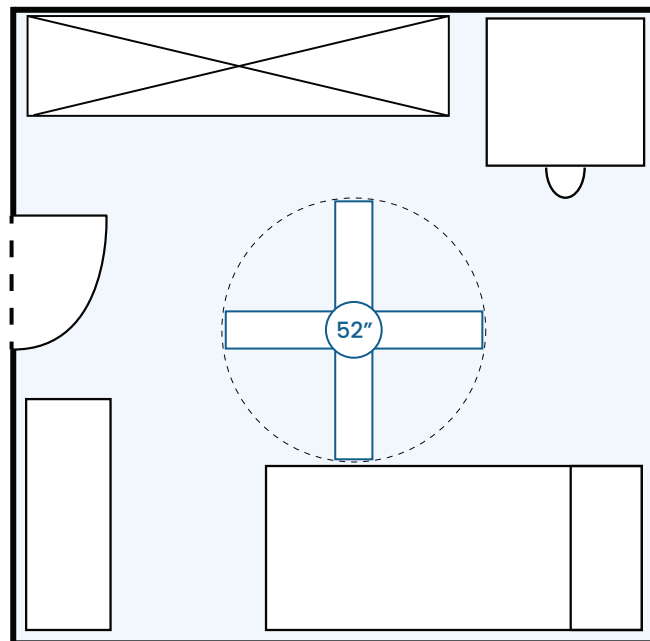
There's no exact science to selecting the right size ceiling fan for a space (as every room layout is different), but the following sections will help guide you in the right direction. Always ensure **at least 50cm of space from the tip of any blade to any wall**. Pay attention to high furniture or floor-to-ceiling wardrobes to make sure they won't reduce your fan's performance.



SMALL SPACES

For small spaces (small bedrooms, home offices, media rooms, etc.) that are less than **3m x 3m**, we would recommend 48" or smaller ceiling fans. A small Australian bedroom is around 2.8m x 2.5m, in which space we would recommend a 44" ceiling fan, although depending on the room layout a 48" would still suit.

For small spaces, consider your lighting requirements – you will most likely require a light kit on your ceiling fan. Having a 48" ceiling fan in a small space may dominate the décor in the room – so consider the style of the ceiling fan to be installed.



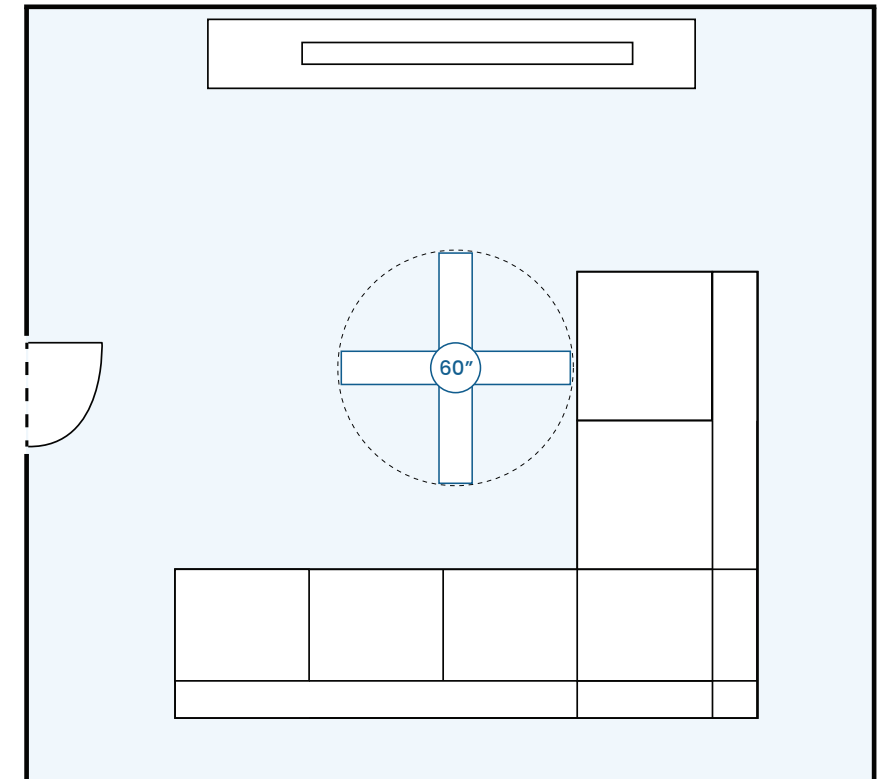
MEDIUM SPACES

For medium spaces (standard bedrooms, living areas, dining areas, etc.) that are between **3m x 3m** and **4m x 4m**, consider ceiling fans between 48" and 56" in size, depending on the exact size of your room. The average bedroom size in an Australian home is around 3.2m by 3.0m, in which space we would recommend a 52" ceiling fan.

For larger than average bedrooms, up to 56" model sizes may be suitable. A 56" model in the standard bedroom would fit (depending on layout), however may dominate the space and provide too much airflow volume.

The average **Master Bedroom** in an Australian home is 4m x 3.8m and blurs the line between medium and large spaces. This would allow for ceiling fans up to 60" in diameter, although a 52" ceiling fan positioned directly over the bed would still provide the necessary cooling while you sleep. A small Master Bedroom that is 3.5m x 3.5m would suit either a 52" or 56" ceiling fan.

The average **Living Room** in an Australian home is 4.2m x 3.4m and suits models between 52" and 56" in diameter. Try to position your ceiling fan over key gathering points – e.g. the couch in a living room – to provide the most cooling.



LARGE SPACES

For large spaces (large master bedrooms, large living areas, etc.) that are over **4.0m x 4.0m**, consider ceiling fans that are over 56" in size. An average master bedroom in Australia is 4.2m x 3.9m, which would suit a 56" blade span ceiling fan. For very large spaces, it is often more effective to install multiple smaller ceiling fans located over specific gathering points (couch, dining table, etc.) as opposed to one large ceiling fan.

A very large **master bedroom** (e.g. 5m x 4.2m) may suit a ceiling fan up to 70" in diameter for people that enjoy a gentle, quiet ceiling fan while they sleep.

A large **Living Room** that is **5.5m x 5m** would suit models 56" and larger in size, although a 56" model would need to be well-positioned and would only provide localised cooling (e.g. over a couch).

Depending on the type of cooling you are looking for, a larger ceiling fan may suit the space better but factor in the type of airflow and cooling you would prefer.

OUTDOOR SPACES

Outdoor spaces are a little different to indoor areas since they typically lack four walls to help feed airflow back to the fan and improve air circulation. Therefore, it is often beneficial to use a smaller, higher-velocity ceiling fan positioned directly over key gathering points (e.g. seating areas) or cooking areas.

So for outdoor applications of ceiling fans, the velocity and the CM/H of the fan is very important as the air provided will be forced down and simply be lost in the outdoor environment.

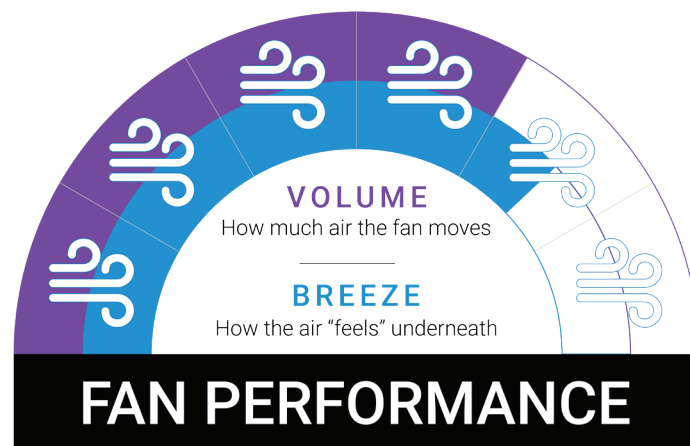
Fortunately, when fans are used outdoors it is generally not in a sound-sensitive environment so a high velocity, high RPM fan will provide adequate cooling and breeze in these situations.

Ceiling Fan Performance

Our Fan Performance Indicator (FPI) is designed to help you understand the type of breeze you can expect under the fan, along with the total airflow volume.

The best way to know what type of airflow a ceiling fan will provide is to stand under it, of course. However, this is not always possible so we have created our Fan Performance Indicator (FPI) rating system to help understand the type of Breeze you can expect under the fan, along with the total volume of air the fan will move at high speed.

The Fan Performance Indicator (FPI) is split into two bars – the blue bar indicates the ceiling fan's airflow breeze (wind chill) performance on high speed, while the purple bar indicates the ceiling fan's airflow volume (CM/H) on high speed.



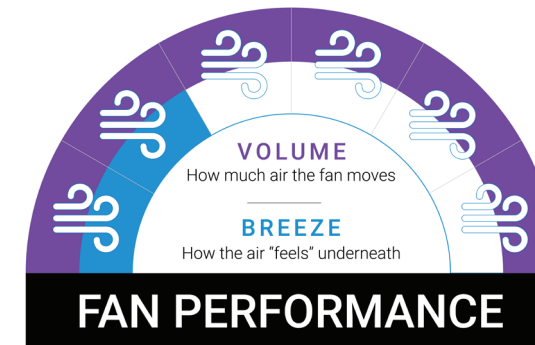
AIRFLOW – VOLUME

The Airflow Volume rating takes the ceiling fan's Cubic Metre per Hour (CM/H) measurement and normalises the results across our entire range of ceiling fans and based on our industry experience on how much air ceiling fans typically move. A ceiling fan towards the Low end will move less air overall, and would therefore not be recommended for larger spaces but may be perfectly suitable for smaller areas. Conversely, a ceiling fan towards the High end moves a lot of air and will disperse the air over a larger area.

AIRFLOW – BREEZE

The Airflow Breeze rating goes from Gentle to Fast. A ceiling fan that is more towards the Gentle end will provide gentle, relaxing, and extremely quiet airflow directly below the fan. Conversely, a ceiling fan that is towards the Fast end will provide high velocity airflow directly below the fan, ideal for very hot and humid climates or if you prefer strong airflow.

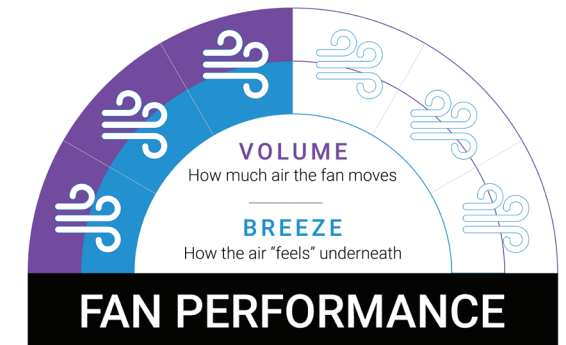
Using the Volume and Breeze ratings together helps paint a clearer picture of the overall performance provided by the ceiling fan.



FPI: 100 INCH KIRRA DC CEILING FAN

The FPI results from our massive 100" Kirra ceiling fan show a more gentle airflow breeze solution with very high airflow volume. This particular model falls into the High Volume Low Speed (HVLS) genre of ceiling fans.

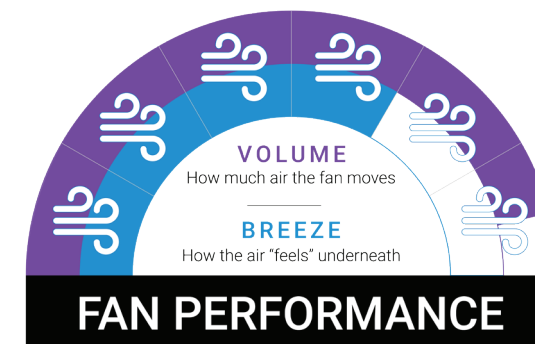
It is designed to move huge volumes of air but at a low velocity. The breeze you would experience directly under the fan would be gentle, however, due to the size of the fan (100 inches), you would enjoy a breeze in a much larger area.



FPI: 52 INCH MODN-3 AC CEILING FAN

The above FPI results from our 52" Modn-3 ceiling fan show a midrange model in terms of breeze and airflow volume. This type of model would suit smaller enclosed spaces (e.g. bedrooms) if you like a gentle breeze while you sleep, or any space where you want a breeze but don't enjoy extremely strong airflow.

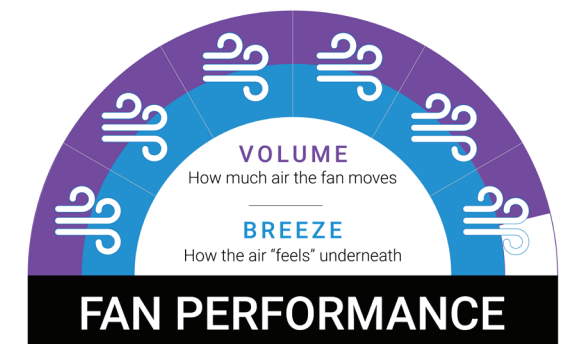
It may suit dining areas and lounge areas where a gentle breeze is desired, without disturbing the conversation or table settings.



FPI: 60 INCH SPITFIRE AC CEILING FAN

The above FPI results from our 60" Spitfire ceiling fan show a ceiling fan that will provide moderate airflow directly below and spreading out from the fan. This is because at 60 inches it is an above-average size ceiling fan that will therefore disperse air over a larger area.

Great for master bedrooms, larger living and dining areas where solid airflow is desired while being whisper-quiet.



FPI: 56 INCH DELTA DC CEILING FAN

The 56" Delta DC ceiling fan show a high-performance solution that will provide a strong breeze directly below the fan while also providing good overall airflow volume for your space.

A great all-round choice that will provide a great balance of airflow cooling directly below the fan while also ensuring strong airflow circulation in a space.

How high to hang *your fan*



It is important to hang your ceiling fan at an optimal height to provide sufficient airflow and cooling.

One often overlooked variable in the performance of a ceiling fan is its distance both from where the air needs to be delivered but also the distance of the fan from the ceiling. While it makes sense that you want the breeze velocity from the fan close to where it is needed to create optimal wind chill and breeze, this air needs to come from somewhere.

Ceiling fans draw in air from above and force it down to create the breeze we feel. If there is a restriction of the available air above the blades for the fan to draw upon, this can create a vacuum effect and begin to draw the same air that is being displaced down, back up to the top of the fan. This results in a “cavitation” effect and impedes the performance of the fan. In most cases the ceiling fan

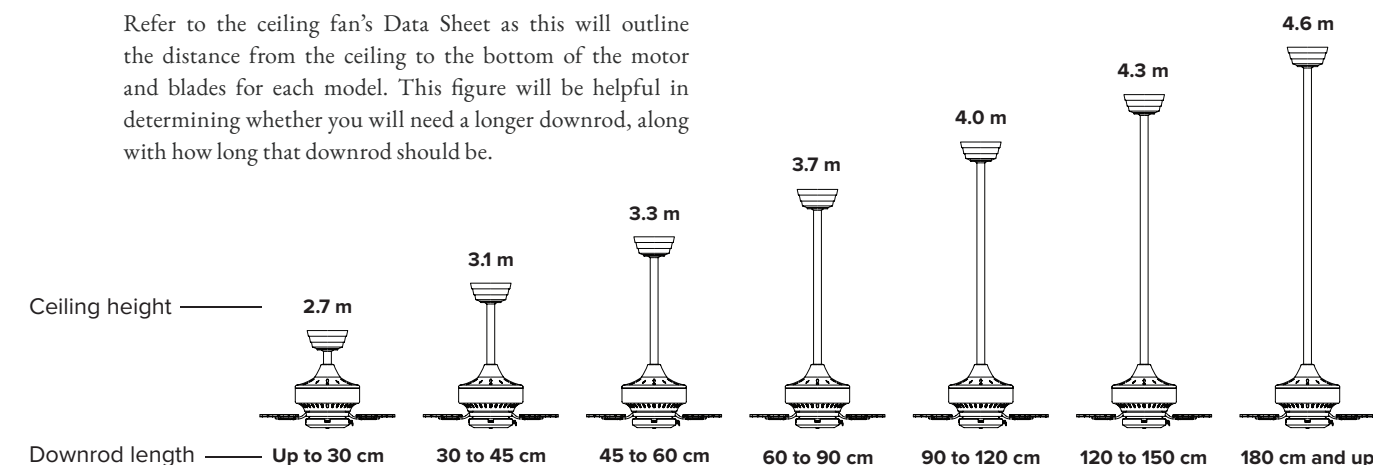
provided to you in a box is not set to its optimum drop away from the ceiling, it is generally provided to you to be 30cm from the ceiling as this is the minimum height requirement on a standard 2.4m ceiling in Australia.

If you have the luxury in your space to be able to drop the fan down from the ceiling via a downrod it is advisable to do so to get the most out of your fan’s performance. For starters this gets the maximum velocity of the air forced closer to where it is needed, however, it is equally important for the fan to have as much unobstructed access to air from above to force it down efficiently.

Your ceiling fan's blades must always be at least 2.1m from the floor to meet safety regulations.

In terms of buying a downrod accessory for your ceiling fan, all our downrods are available in either 90cm or 180cm lengths and these can be cut to custom lengths by your installing electrician. The exact recommended downrod length for each ceiling height will vary slightly between models, as it depends on how deep the fan itself is.

Refer to the ceiling fan’s Data Sheet as this will outline the distance from the ceiling to the bottom of the motor and blades for each model. This figure will be helpful in determining whether you will need a longer downrod, along with how long that downrod should be.



Consider your ceiling slope or angle as this will affect which models will suit.

Most of our ceiling fan's support sloped or raked ceilings up to a certain angle – the exact angle varies between models and is largely influenced by the presence (or lack thereof) of a remote control receiver unit. Ceiling fans that require remote control receivers will support much lower ceiling angles due to the position of the receiver in the ceiling canopy.

Our Sloped Ceiling Kit is available for customers wanting to install their ceiling fan's on sloped ceilings and often provides significant improvements. This accessory can be used on ceiling fans with 26mm downrods and supports angles up to 45° for both AC and DC ceiling fans with or without remote controls.

SCAN QR CODE



For more information on our Sloped Ceiling Kit and for the latest sloped ceiling angles supported, refer to our sloped ceiling kit guide.



Ceiling fans designed for
Australians, by Australians.

OFFICE

40 Commerce Cct
Yatala QLD 4207

T: 1300 469 326

E: info@360fans.com.au

BUSINESS HOURS

Monday to Friday
8:00 am – 5:00 pm AEST

Instagram [@360fans_au](https://www.instagram.com/@360fans_au)
Facebook [@360fans](https://www.facebook.com/@360fans)

www.360fans.com.au